

Alacarte Clasps™

Creative freedom to choose your own finish and crystal colors

- Designed to fit SWAROVSKI ELEMENTS
- Nickel-free, multi-layered plating in gold, rhodium & exotic finishes
- Clasps sold 'blank' without crystals OR choose your crystal color and receive it finished!

2012 Catalog



Baguette

A mesmerizing design of six baguette crystals all neatly framed in this exquisite three-strand clasp. Whether you intermingle colors or choose one, simply glue-in crystals for a result that is undeniably impressive.

Select from our assortment of Swarovski® crystal. Buy only what you need or keep several crystal colors and clasps on hand so you can design when you're inspired.

Available in two polished etched texture, nickel-free plated finishes: gold and rhodium.



Ideas to inspire...



highlight a single color



mix colors to create a stained glass window



a vibrant color creates an eye-catching focal point

| | | | |
|-------------------|------------|------------------------------|---------|
| Clasp style: | Baguette | Size: | 20x18mm |
| Skill level: | easy | Strands: | 3 |
| Time approx: | 10 minutes | Nickel-free plated finishes: | |
| Crystals to glue: | 6 | • rhodium | |
| | | • gold | |

Crystals needed (foil, pointback):

| QTY | SIZE | SHAPE | SWAROVSKI® STYLE # |
|-----|-------|----------|--------------------|
| 6 | 7x3mm | baguette | 4501 |

Tools needed:

- jewelers tweezers (see helpful hints below)
- 2-part all purpose 5-minute epoxy, clear drying

How to:

- Mix glue per instructions, apply to inside bezel areas on clasp (not on crystal).
- Set in crystal and adjust to make sure crystal is level.

Helpful hints:

- Instead of tweezers, use a toothpick with a tiny bit of museum putty or natural bee's wax rolled on the tip. It will stick to the crystal so you can position it and releases easily.
- If you get glue on the crystals or clasp, dampen (squeeze out all excess) a Q-tip in isopropyl alcohol to remove. This only works if the glue has not set.

Alacarte Clasps™

Glue-it-Yourself Designer Clasps & Components

www.alacartecclasps.com
 email: info@alacartecclasps.com
 tel 707.887.2825
 fax 707.887.1214

Flamenco

Rhythmic swirls and intricate curves will get your creative juices pulsating with this three-strand clasp. Express your passion by gluing-in two 6x8mm pointback or flatback crystals, cabochons or gemstones. Comes with 16 glued-in clear Swarovski® crystals adding a lively sparkle *olé!*

Select from our assortment of Swarovski® crystal. Buy only what you need or keep several crystal colors and clasps on hand so you can design when you're inspired.

Available in three highly polished nickel-free plated finishes: gold, rhodium and ruthenium.



Ideas to inspire...



fit for royalty - opal cabochons with gold



faceted crystal with rhodium is breathtaking



an exotic duo - crystal cabochons with ruthenium

Clasp style: Flamenco
 Skill level: easy
 Time approx: 5 minutes
 Crystals to glue: 2

Size: 65x25mm
 Strands: 3
 Nickel-free plated finishes:
 • rhodium
 • gold
 • ruthenium



Crystals needed (with or without foil back):

| QTY | SIZE | SHAPE | SWAROVSKI® STYLE # s |
|-----|-------|-------|--|
| 2 | 6x8mm | oval | 4100 or 4120 faceted, pointback 2190/4 cabochon, flatback |

Tools needed:

- jewelers tweezers (see helpful hints below)
- 2-part all purpose 5-minute epoxy, clear drying

How to:

- Mix glue per instructions, apply to inside bezel edge of clasp (not on crystal).
- Set in crystal and adjust to make sure crystal properly set.

Helpful hints:

- Instead of tweezers, use a toothpick with a tiny bit of museum putty or natural bee's wax rolled on the tip. It will stick to the crystal so you can position it and releases easily.
- If you get glue on the crystals or clasp, dampen (squeeze out all excess) a Q-tip in isopropyl alcohol to remove. This only works if the glue has not set.

Alacarte Clasps™

Glue-it-Yourself Designer Clasps & Components

www.alacartecclasps.com
 email: info@alacartecclasps.com
 tel 707.887.2825
 fax 707.887.1214

Leaf

A graceful leaf glistens with 22 crystals you glue-in to create a shimmering elegant closure. Mix crystal colors to reflect the seasons or try crystal AB to sparkle like dew.

Select from our extensive inventory of Swarovski® crystal. Buy what you need or keep several crystal colors and clasps on hand so you can design whenever you're inspired.

Available in three highly polished nickel-free plated finishes: gold, rhodium and ruthenium.



Ideas to inspire...



Leaf clasp with WireLace using two crystal colors

Clasp style: Leaf
 Skill level: easy
 Time approx: 15 minutes
 Crystals to glue: 22

Size: 20x16mm
 Strands: 1
 Nickel-free plated finishes:
 • gold
 • rhodium
 • ruthenium



Crystals needed (foil, pointback):

| QTY | SIZE | SHAPE | SWAROVSKI® STYLE # |
|-----|-------|----------------|--------------------|
| 22 | PP 10 | chaton (round) | 1028 |

Tools needed:

- jewelers tweezers (see helpful hints below)
- 2-part all purpose 5-minute or longer epoxy, clear drying.

How to:

- Mix glue per instructions.
- Apply a small amount in the recessed areas on the clasp. Set in crystal and adjust to make sure crystal is level.

Helpful hints:

- Instead of tweezers, use a toothpick with a tiny bit of museum putty, tact-it putty, or natural bee's wax rolled on the tip. It will stick to the crystal so you can position it and releases easily.
- Try a head pin to apply glue for easier application to small areas.
- If you get glue on the crystals or clasp, dampen (squeeze out all excess) a Q-tip in isopropyl alcohol to remove. This only works if the glue has not set.

Alacarte Clasps™

Glue-it-Yourself Designer Clasps & Components

www.alacartecclasps.com
 email: info@alacartecclasps.com
 tel 707.887.2825
 fax 707.887.1214

©2012 Alacarte Clasps™. All rights reserved.
 Alacarte Clasps™ is a registered trademark of Hartung & Associates, Ltd.



Magnetic Attractions

Graceful design combines with effortless connection in three magnetic clasp styles. Join a single strand of pearls or multi-stands of seedbeads directly into the clasp for a fluid elegant transition.

Achieve the look of fine pavé set jewelry with 90 tiny crystals you glue-in to the Crystal Barrel clasp. Mix colors or design a pattern to create your own unique treasure.

Select from our assortment of Swarovski® crystal. Buy only what you need or keep several crystal colors and clasps on hand so you can design when you're inspired.

Each magnetic clasp offers a distinctive style in several nickel-free plated finishes.

WARNING: Persons wearing a pacemaker or pregnant should consult their physician before wearing magnetic jewelry. Magnets may contain nickel.

Ideas to inspire...



create a classic combination with 12mm pearls



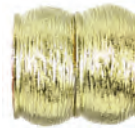
multiple-stands of seedbeads meet a stylish end



sparkle, style and function unite together



a grand finalé for your most prized beads



Scallop Barrel

Size: 15x12mm
Nickel-free plated finishes:

- gold
- rhodium
- old copper
- pewter

Etched Barrel

Two sizes:
Small: 13x13mm
Large: 15x15mm
Nickel-free plated finishes:

- gold
- rhodium

Crystal Barrel

Size: 16x15mm
Nickel-free plated finishes:

- gold
- rhodium

Crystals needed (foil, pointback):

| QTY. | SIZE | SHAPE | SWAROVSKI® STYLE # |
|------|------|-------|--------------------|
| 60 | pp10 | round | 1028 |
| 30 | pp15 | round | 1028 |

Skill Level: Moderate to Hard
Time approx: 1 hour



cupped outside



glue area inside



loose magnet, dimple-side glues down



magnet glued into clasp, smooth sides of magnets connect together

Tools needed:

- emery board or jewelers file
- chainnose or pointed pliers
- 2-part all purpose 5-minute epoxy, clear drying
- *Crystal Barrel:* jewelers tweezers (see helpful hints)

How to glue crystals:

- Mix glue per instructions. Apply small drop of glue in recessed areas. Only do as many as you can set before glue gets tacky.
- Turn when crystals are set and repeat.

Helpful hints:

1. Use museum putty to hold clasp in place.
2. Instead of tweezers, use a toothpick with a tiny bit of museum putty or natural bee's wax rolled on the tip. It will stick to the crystal so you can position it and releases easily.
3. If you get glue on the crystals or clasp, dampen (squeeze out all excess) a Q-tip in isopropyl alcohol to remove glue residue. This only works if the glue has not set.

How to finish & glue magnets

Skip gluing steps 1 & 2 if using seedbead strands

1. Apply 2-part epoxy to cupped side recessed area. Pull wire/string through hole. Tighten and crimp at the base of the hole. Use a chainnose pliers or similar to crimp close to magnet.
2. Let glue dry to ensure bead is fixed in the clasp.
3. Clip excess string from crimp
4. **IMPORTANT:** BEFORE gluing in magnets TEST to make sure magnets will sit properly into clasp and if needed, trim crimp/string. Dimple side of magnet glues facing down. Smooth sides of magnets connect together.
5. Lightly rough up sides and bottom of magnet with emery board or jewelers file.
6. Apply a liberal amount of glue on bottom, sides and knot/crimp area.
7. Drop in magnet and press firmly in place. Check to make sure magnet is correct depth and not tilted. Continue to apply pressure until glue has set.
8. Wipe off excess glue (see helpful hints #3).
9. Do not connect magnets before fully dry as it could loosen the bond when you separate them.

Alacarte Clasps™

Glue-it-Yourself Designer Clasps & Components

www.alacartecclasps.com
email: info@alacartecclasps.com
tel 707.887.2825
fax 707.887.1214

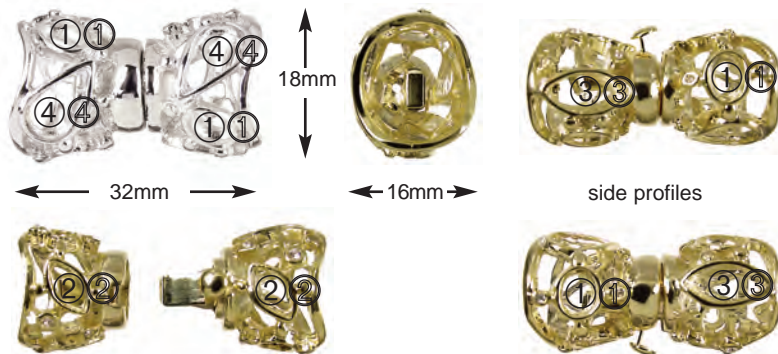
Mardi Gras

Finally a jazzy alternative to cone ends, toggles and lobster claw clasps.

Beautiful cut-out style and gentle curves combine with 10 crystals to give you 360 degrees of sparkling elegance. You simply choose the crystal colors and glue them in. As an added bonus we've glued-in 8 tiny clear Swarovski® crystal accents for that extra touch of shimmer.

Select from our assortment of Swarovski® crystal. Buy only what you need or keep several crystal colors and clasps on hand so you can design when you're inspired.

Available in two highly polished nickel-free plated finishes: gold and rhodium.



press-n-pull lever is secure & easy to open

Ideas to inspire...



seedbeads & crystal flow together seamlessly



multiple strands of pearls for a tailored look



offset crystals for trend-setting modern style



14mm bead tucks-in for a smooth transition

Clasp style: Mardi Gras
 Skill level: easy-medium
 Time approx: 20 minutes
 Crystals to glue: 10

Size: 32x18x16mm
 Nickel-free plated finishes:
 • rhodium
 • gold



Crystals needed (foil, pointback):

| QTY | SIZE | SHAPE | SWAROVSKI® STYLE # | PLACEMENT |
|-----|--------|----------|--------------------|-----------|
| 4 | 6X4mm | oval | 4100 | ① |
| 2 | 8x4mm | navette | 4200 | ② |
| 2 | 10x5mm | navette | 4200 | ③ |
| 2 | 10x6mm | teardrop | 4300 | ④ |

Tools needed:

- jewelers tweezers (see helpful hints below)
- 2-part all purpose 5-minute epoxy, clear drying

How to:

- Mix glue per instructions, apply to inside bezel edge of clasp (not on crystal).
- Set in crystal and adjust to make sure crystal is level. Let glue harden a few minutes then turn and repeat till all sides complete.

Helpful hints:

- Use museum putty to hold clasp in place.
- Instead of tweezers, use a toothpick with a tiny bit of museum putty or natural bee's wax rolled on the tip. It will stick to the crystal so you can position it and releases easily.
- If you get glue on the crystals or clasp, dampen (squeeze out all excess) a Q-tip in isopropyl alcohol to remove. This only works if the glue has not set.

Alacarte Clasps™

Glue-it-Yourself Designer Clasps & Components

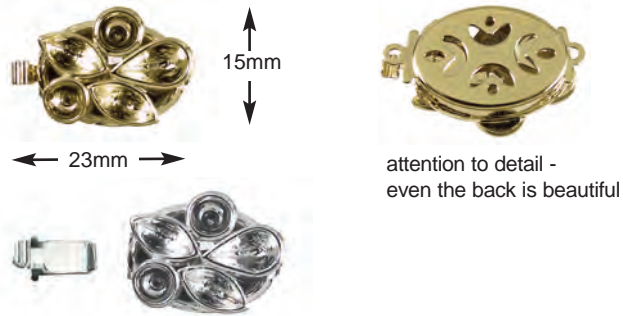
www.alacartecclasps.com
 email: info@alacartecclasps.com
 tel 707.887.2825
 fax 707.887.1214

Montage

A jumble of shapes collect together creating an irresistible design. Five crystals in three shapes give you the opportunity to create a vast array of color combinations.

Select from our assortment of Swarovski® crystal. Buy what you need or keep several crystal colors and clasps on hand so you can design whenever you're inspired.

Available in two highly polished nickel-free plated finishes: gold and rhodium.



press-n-pull lever is secure & easy to open

Ideas to inspire...



multiple crystal colors reflect necklace style



add an unexpected splash of sparkle to pearls

Clasp style: Montage
 Skill level: easy
 Time approx: 10 minutes
 Crystals to glue: 5

Size approx: 23x15mm
 Nickel-free plated finishes:
 • rhodium
 • gold plate



Crystals needed (foil, pointback):

| QTY | SIZE | SHAPE | SWAROVSKI® STYLE # |
|-----|---------|----------|--------------------|
| 2 | ss19 | round | 1028 |
| 2 | 8x4mm | navette | 4200 |
| 1 | 8x4.8mm | teardrop | 4300 |

Tools needed:

- jewelers tweezers (see helpful hints below)
- 2-part all purpose 5-minute epoxy, clear drying

How to:

- Mix glue per instructions, apply to inside bezel of clasp (not on crystal).
- Set in crystal and adjust to make sure crystal is level.

Helpful hints:

- Instead of tweezers, use a toothpick with a tiny bit of museum putty or natural bee's wax rolled on the tip. It will stick to the crystal so you can position it and releases easily.
- If you get glue on the crystals or clasp, dampen (squeeze out all excess) a Q-tip in isopropyl alcohol to remove. This only works if the glue has not set.

Alacarte Clasps™

Glue-it-Yourself Designer Clasps & Components

www.alacartecclasps.com
 email: info@alacartecclasps.com
 tel 707.887.2825
 fax 707.887.1214

Rotunda

Elegant freeform sculptured border provides the perfect frame to glue your 16mm cabochon onto this three-strand clasp. Intricate detail adds dimension with contrasting polished and textured finish.

Select from our assortment of 16mm cabochons or use your own. Buy what you need or keep a variety of cabochons and clasps on hand so you can design when you're inspired.

Available in two nickel-free plated finishes: gold and rhodium.

Ideas to inspire...



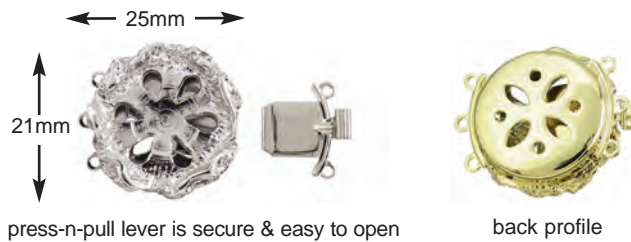
Careful clipping changes three strands into one



Coordinating beads complete your masterpiece



An elegant connection for multiple strands



press-n-pull lever is secure & easy to open

back profile

Clasp style: Rotunda
 Skill level: easy
 Time approx: 5 minutes
 Items to glue: 1

Approx. size: 32x18x16mm
 Strands: 3
 Nickel-free plated finishes:
 • rhodium
 • gold



Cabochon or Crystal needed:

| QTY | SIZE | SHAPE | STYLE # |
|-----|----------|-------|-------------------------------------|
| 1 | 16044P24 | n/a | swarovski 3 layer crystal |
| 1 | 16mm | round | cabochon (flatback, no bevel edges) |

Tools needed:

- 2-part all purpose 5-minute epoxy, clear drying

How to:

- Remove lever to avoid glue dripping on it through the holes.
- Mix glue per instructions, apply to base of clasp (not on cabochon).
- Set cabochon and adjust to make sure it is seated in the correct position.

Helpful hints:

- Rough up the bottom of the cabochon using a jeweler's file or emery board to remove high spots and provide better adhesion of glue.
- If you get glue on the clasp or cabochon, dampen (squeeze out all excess) a Q-tip in isopropyl alcohol to remove. This only works if the glue has not fully

Alacarte Clasps™

Glue-it-Yourself Designer Clasps & Components

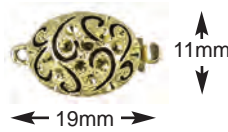
www.alacartecclasps.com
 email: info@alacartecclasps.com
 tel 707.887.2825
 fax 707.887.1214

Starry Night

As enchanting as Van Gogh's painting, this elegant clasp will inspire the artist in you. Tiny crystals infuse a spray of sparkle across its gently arched dome. A delicate texture and cut-out swirls combine with 16 crystals you glue-in to add the finishing touch to your masterpiece.

Select from our assortment of Swarovski® crystal. Buy what you need or keep several crystal colors and clasps on hand so you can design when you're inspired.

Available in two nickel-free plated finishes: gold and rhodium.



press-n-pull lever is secure & easy to open



attention to detail – even the back is elegant

Ideas to inspire...



coordinating crystals complete the union



freshwater pearls meet an elegant end

Clasp style: Starry Night
 Skill level: easy-medium
 Time approx: 15 minutes
 Crystals to glue: 16

Approx. size: 19x11x7mm
 Strands: 1
 Nickel-free plated finishes:
 • rhodium
 • gold



Crystals needed (foil, pointback):

| QTY | SIZE | SHAPE | SWAROVSKI® STYLE # |
|-----|------|-------|--------------------|
| 16 | pp10 | round | 1028 |

Tools needed:

- jewelers tweezers (see helpful hints below)
- 2-part all purpose 5-minute epoxy, clear drying

How to:

- Mix glue per instructions. Apply small drop of glue to recessed bezel areas (not on crystal). Only do as many as you can before glue gets tacky.
- Set in crystal and adjust to make sure crystal is level.

Helpful hints:

- Instead of tweezers, use a toothpick with a tiny bit of museum putty or natural bee's wax rolled on the tip. It will stick to the crystal so you can position it and releases easily.
- If you get glue on the crystals or clasp, dampen (squeeze out all excess) a Q-tip in isopropyl alcohol to remove. This only works if the glue has not set.

Alacarte Clasps™

Glue-it-Yourself Designer Clasps & Components

www.alacartecclasps.com
 email: info@alacartecclasps.com
 tel 707.887.2825
 fax 707.887.1214

Teardrop

From the sleek shape and soft curved edges to the smooth finished underside, this clasp is the height of refined elegance.

Add the finishing touch to your masterpiece by selecting one crystal color to glue-in. For an encore performance ask about our coordinating nickel-free pierced post earrings.

Select from our assortment of Swarovski® crystal. Buy what you need or keep several crystal colors and clasps on hand so you can design whenever you're inspired.

Available in two highly polished nickel-free plated finishes: gold and rhodium.



Ideas to inspire...



compliments diamond faceted crystals



a beautiful marriage of glass & crystal



matching nickel-free pierced post earrings

Clasp style: Teardrop
 Skill level: easy
 Time approx: 5 minutes
 Crystals to glue: 1

Size: 20x10x5mm
 Strands: 1
 Nickel-free plated finishes:
 • rhodium
 • gold



Crystals needed (foil, pointback):

| QTY | SIZE | SHAPE | SWAROVSKI® STYLE # |
|-----|---------|----------|--------------------|
| 1 | 8x4.8mm | teardrop | 4300 |

Tools needed:

- jewelers tweezers (see helpful hints below)
- 2-part all purpose 5-minute epoxy, clear drying

How to:

- Mix glue per instructions. *Before you glue, remove the lever to avoid glue dripping on it through the hole in the bottom of the crystal setting.*
- Apply a thin layer in the recessed area on the clasp avoiding the hole. Set in crystal and adjust to make sure crystal is level. Gently press down to ensure crystal is fully seated.

Helpful hints:

- Instead of tweezers, use a toothpick with a tiny bit of museum putty or natural bee's wax rolled on the tip. It will stick to the crystal so you can position it and releases easily.
- If you get glue on the crystals or clasp, dampen (squeeze out all excess) a Q-tip in isopropyl alcohol to remove. This only works if the glue has not set.

Alacarte Clasps™

Glue-it-Yourself Designer Clasps & Components

www.alacartecclasps.com
 email: info@alacartecclasps.com
 tel 707.887.2825
 fax 707.887.1214

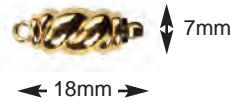
Twist

A graceful twist meets you at every turn. This 360 degree clasp is elegant from all sides and features a lever that inserts from either direction.

Available in two highly polished nickel-free plated finishes: gold and rhodium.




Your jewelry will look good from any angle finished with an elegant Twist clasp.



Easy to open and close. The press-n-pull lever inserts in either direction.



Twist clasp reflects the style of necklace made with 1mm black WireLace®.

| | | |
|--------------|-------|---|
| Clasp style: | Twist | Size: 18x7mm |
| | | Strands: 1 |
| | | Nickel-free plated finishes: |
| | | • gold |
| | | • rhodium |
| | |  |

Alacarte Clasps™

Glue-it-Yourself Designer Clasps & Components

www.alacartecclasps.com
email: info@alacartecclasps.com
tel 707.887.2825
fax 707.887.1214

Windows

Modern and bold yet sophisticated and refined, this multi-strand clasp is like a breath of fresh air. Highly polished finish and sleek curves combine with six princess cut crystals you glue-in.

Select from our assortment of Swarovski® crystal. Buy what you need or keep several crystal colors and clasps on hand so you can create whenever you're in the mood.

Available in three highly polished nickel-free plated finishes: gold, rhodium and ruthenium.

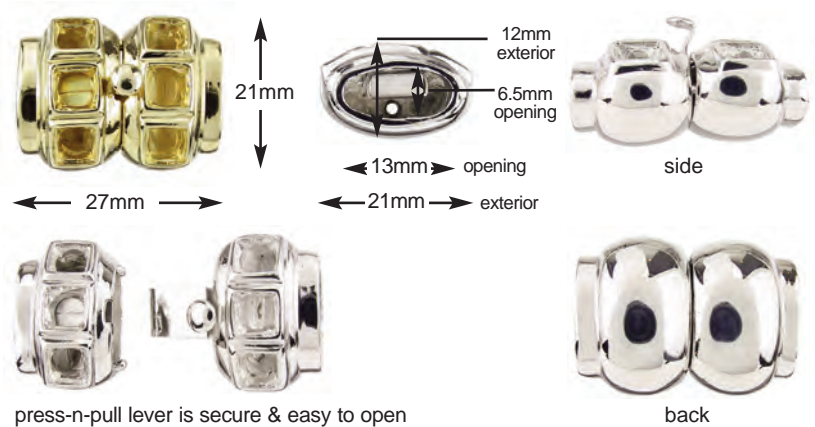
Ideas to inspire...



combine colors to create a stunning focal piece



exotic and elegant ruthenium finish with crystal



Clasp style: Windows
 Skill level: easy
 Time approx: 10 minutes
 Crystals to glue: 6

Size approx.
 • Exterior: 27x21x12mm
 • Opening: 13x6.5mm
 Nickel-free plated finishes:
 • rhodium
 • gold
 • ruthenium



Crystals needed (foil, pointback):

| QTY | SIZE | SHAPE | SWAROVSKI® STYLE # |
|-----|------|--------|--------------------|
| 6 | 5mm | square | 4400 or 4428 |

Tools needed:

- jewelers tweezers (see helpful hints below)
- 2-part all purpose 5-minute epoxy, clear drying

How to:

- Mix glue per instructions. Apply glue to recessed bezel (not on crystal).
- Set in crystal and adjust to make sure crystal is level.

Helpful hints:

- Use museum putty to hold clasp in place.
- Instead of tweezers, use a toothpick with a tiny bit of museum putty or natural bee's wax rolled on the tip. It will stick to the crystal so you can position it and releases easily.
- If you get glue on the crystals or clasp, dampen (squeeze out all excess) a Q-tip in isopropyl alcohol to remove. This only works if the glue has not set.

Alacarte Clasps™

Glue-it-Yourself Designer Clasps & Components

www.alacartecclasps.com
 email: info@alacartecclasps.com
 tel 707.887.2825
 fax 707.887.1214

Hinged Bails

Hinged bails make any pendant interchangeable. The secret is in the hidden hinge that allows you add or remove a pendant to suit your style. Attach your creation to the ring and you're ready to clip it on your necklace.

Complete the Crystal and Petite Crystal bails by selecting crystal colors from our assortment of Swarovski® and glue-in. Buy only what you need or keep several crystal colors and bails on hand so you can create whenever you're inspired.

Available in two nickel-free plated finishes: gold, rhodium, old copper and pewter.

Ideas to inspire...



Adorn your pearls with a beautiful removable pendant.



Hinged bails make any pendant interchangeable.



Crystal Bail

Size: 16x6mm
crystals sold separately
Top: 2, PP15
Bottom: 1, PP10



Old Copper Pewter

Size: 16x6mm



Etched Bail

Size: 16x6mm



Hammered Bail

Size: 16x6mm



Petite Crystal Bail

Size: 13x3mm
crystals sold separately
All: 4, PP10



Petite Plain Bail

Size: 13x2mm



side hinge open



side hinge closed

Generous sized opening allows you to clip on large chains, omegas, multiple strands of seedbeads, or between crystals or pearls.



side hinge open



side hinge closed

Petite bails clip over thin chain, cable a narrow omega, a few strands of seedbeads, or between crystals or pearls.

All styles available in nickel-free plated: gold, rhodium, old copper & pewter.



Bail style: Crystal Bail

Skill level: easy

Time approx: 5

Crystals to glue: 3

Bail style: Petite Crystal Bail

Skill level: easy

Time approx: 5

Crystals to glue: 4

Crystals needed (foil, pointback):

| QTY | SIZE | SHAPE | SWAROVSKI® STYLE # |
|-----|------|-------|-----------------------|
| 1 | pp10 | round | 1028 |
| 2 | pp15 | round | 1028 |

Crystals needed (foil, pointback):

| QTY | SIZE | SHAPE | SWAROVSKI® STYLE # |
|-----|------|-------|-----------------------|
| 4 | pp10 | round | 1028 |

Tools needed:

- jewelers tweezers or toothpick with wax or putty to pick up crystal
- 2-part epoxy, all purpose 5-minute (or longer) clear drying

How to:

- Mix glue per instructions. Apply small drop of glue to recessed bezel areas.
- Set in crystal and adjust to make sure crystal is level.

Alacarte Clasps™

Glue-it-Yourself Designer Clasps & Components

www.alacartecclasps.com
email: info@alacartecclasps.com
tel 707.887.2825
fax 707.887.1214

Alacarte Clasps™

NOW SERVING

Creative Nutritional Value 100%

Quality Ingredients 100%

Inspiration 100%

Clasps & Components for the Jewelry Connoisseur
1000's of Recipes for SWAROVSKI ELEMENTS



For a complete menu of products,
go to AlacarteClasps.com or call 707 887 2825.

CREATE
YOUR STYLE
with SWAROVSKI ELEMENTS

Alacarte Clasps™

| Article # | 1028 | 1028 | \$ blank \$ crystals/labor |
|----------------------------|------|------|---|
| Size PP | 10 | 15 | \$ Finished |
| Crystal shape | | | |
| | 22 | | \$ 18.00 \$ 2.50 \$ 20.50 20x16mm G R Ru |
| Leaf | | | |
| | 60 | 30 | \$ 24.00 \$ 16.00 \$ 40.00 16x15mm G R |
| MAGNETIC Crystal Barrel | | | |
| | 16 | | \$ 18.40 \$ 1.60 \$ 20.00 19x11x7mm G R |
| Starry Night | | | |
| | 14 | | \$ 12.50 \$ 1.50 \$ 14.00 14x20mm G R |
| Flair Bail | | | |
| | 1 | 2 | \$ 10.00 \$ 1.00 \$ 11.00 6x16mm G R |
| Crystal Bail | | | |
| | 4 | | \$ 8.00 \$ 1.00 \$ 9.00 2x12mm G R |
| Petite Crystal Bail | | | |

All clasps and componets are nickel-free with multi-layered plating for heirloom quality jewelry.

Plating Finishes
G Gold
R Rhodium
IR Imitation Rhodium
Ru Ruthenium (gunmetal)
OC Old Copper
P Pewter

* Discontinued or Replaced Article #

All prices subject to change without notice.

2011 Menu of Clasps & Components

| Article # | 4100* | 4200* | 4200* | 4300* | 4300* | 1012* | \$ blank \$ crystals/labor |
|---------------|-------------|--------------|--------------|---------------|--------------|-----------------------|---|
| Size MM / SS | 4120 6x4 | 4231* 8x4 | 4228 10x5 | 4328 8x4.8 | 4328 10x6 | 1100* 1028 SS19 | \$ Finished |
| Crystal shape | | | | | | | |
| | 4 | 2 | 2 | | 2 | | \$ 35.00 \$ 9.00 \$ 44.00 32x18x16mm G R |
| Mardi Gras | | | | | | | |
| | | 2 | | 1 | | 2 | \$ 19.20 \$ 3.80 \$ 23.00 23x15mm G R |
| Montage | | | | | | | |
| | | | | 1 | | | \$ 13.20 \$ 1.30 \$ 14.50 20x10x5mm G R |
| Teardrop | | | | | | | |

| Article # | 1028 | 5816 | 5817 | \$ blank \$ crystals/labor |
|----------------|------|--------------|------|---|
| Size PP / MM | 10 | 11x6 15x8 | 8 | \$ Finished |
| Crystal shape | | | | |
| | 9 | 1 | | \$ 5.00 \$ 1.50 w/o pearl \$ 6.50 ea 9mm G R |
| Swirl Cone End | | | | |
| | 16 | 2 | | \$ 20.00 \$ 5.00 \$ 25.00 pair 13x17mm G R |
| Swirl Earrings | | | | |

| Article # | 2190* | \$ blank \$ crystals/labor |
|---------------|---------------------|---|
| Size MM | 4100 4120 8x6 | \$ Finished |
| Crystal shape | | |
| | 2 | \$ 32.00 \$ 2.00 \$ 34.00 65x25mm G R Ru |
| Flamenco | | |

| Article # | 60444 | \$ blank \$ crystals/labor |
|---|-------|---|
| Size MM | 16 | \$ Finished |
| Crystal shape (side) | | |
| | 1 | \$ 17.40 \$ 7.60 \$ 25.00 |
| Rotunda | | |
| | 2 | \$ 29.40 \$ 15.50 \$ 44.90 pair 21mm G R |
| Rotunda Earrings | | |
| ① ② Use your own 16mm cabochon - glass, stone, etc. | | |

| Article # | 4501 | \$ blank \$ crystals/labor |
|---------------|------|--|
| Size MM | 7x3 | \$ Finished |
| Crystal shape | | |
| | 6 | \$ 26.00 \$ 4.00 \$ 30.00 20x18mm G R |
| Baguette | | |

| Article # | 4400* | \$ blank \$ crystals/labor |
|---------------|-------------|--|
| Size MM | 4428 5x5 | \$ Finished |
| Crystal shape | | |
| | 6 | \$ 31.00 \$ 5.00 \$ 36.00 27x21x12mm G R Ru |
| Windows | | |

| Clasps & Bails | \$ |
|----------------------------|---|
| | Large 15x15mm \$ 22.80 Small 13x13mm \$ 16.80 G R |
| MAGNETIC Etched Barrel | |
| | Small 15x12mm \$ 16.80 G R OC P |
| MAGNETIC Scallop Barrel | |
| | \$ 9.70 18x7mm G R |
| Twist | |
| | \$ 8.00 2x12mm G R |
| Petite Bail | |
| | \$ 10.00 6x16mm G R OC P |
| Hammered Bail | |
| | \$ 10.00 6x16mm G R |
| Etched Bail | |
| | \$ 21.00 10 piece pack 7x10mm G IR Ru |
| 7mm Clamshell | |
| | \$ 10.50 10 piece pack 4x7mm G R Ru |
| 4mm Bell Endcaps | |

Alacarte Menu Options

Clasps and componets are available 'a la carte' so you can choose from these options:

- 1) purchase the blanks and use your own SWAROVSKI ELEMENTS;
- 2) purchase the blanks and SWAROVSKI ELEMENTS from Alacarte Clasps and create your own color recipe. Glue-set crystals with 2-part all purpose clear drying epoxy;
- 3) purchase finished - create your own color recipe from available SWAROVSKI ELEMENTS and we'll glue-set the crystals.

For a complete menu of kits, products, show schedule and retailers go to AlacarteClasps.com or call 707-887-2825



CREATE
YOUR STYLE
with SWAROVSKI ELEMENTS